



Alabaster

**CONTACT: TINA DAVIS
PH. 251.649.1200**

ESCAPE TO PARADISE

Exclusive Gated Community located in
Semmes, Alabama

Location of the

2014 HBA SHOWCASE HOME

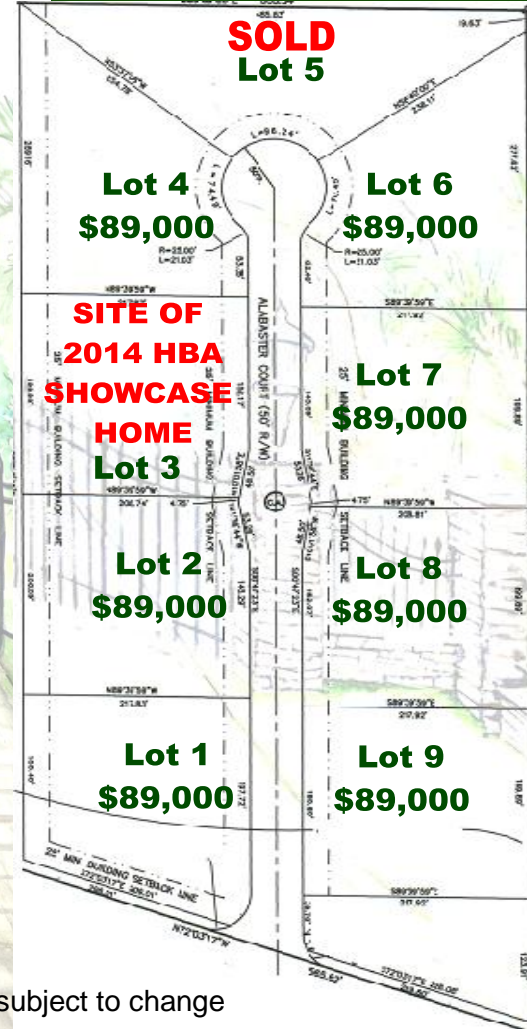
3,600 SF Minimum

Natural stone accented driveway and sidewalks

Nine one (1) acre private lots

Heavy tropical landscaping

Approved builders only



Prices are subject to change



www.TheHarmonyTeam.com