



# Alabaster

CONTACT: TINA DAVIS  
PH. 251.649.1200

## ESCAPE TO PARADISE

**Exclusive Gated Community located in  
Semmes, Alabama**

**Architectural design of  
Mediterranean and Old World flair**

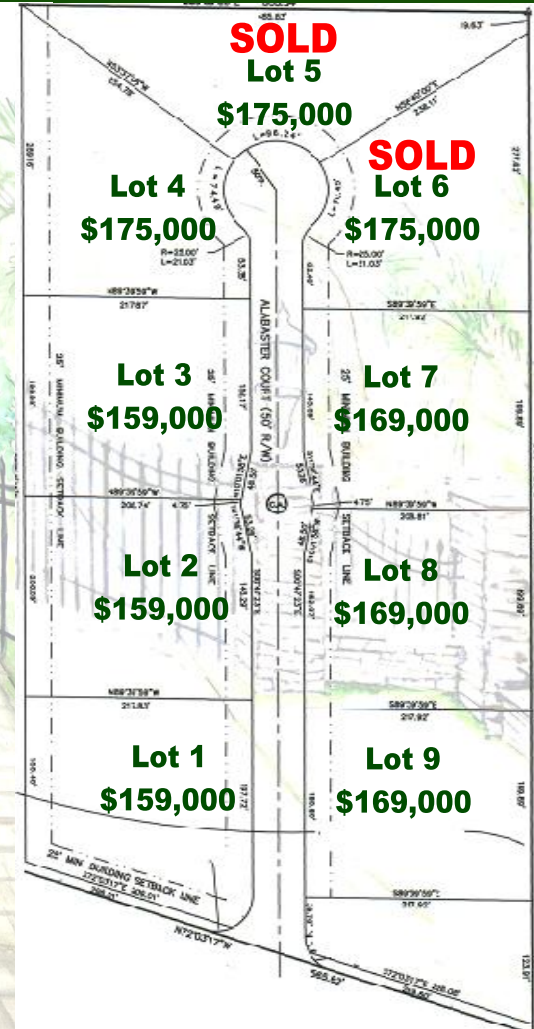
**3,800 SF Minimum**

**Natural stone accented driveway and  
sidewalks**

**Nine one (1) acre private lots**

**Heavy tropical landscaping**

**Approved builders only**



[www.TheHarmonyTeam.com](http://www.TheHarmonyTeam.com)